

Technical data/options

► **Capsule transfer** – Linking the KKE with the Bosch capsule filling machine via pneumatic transfer creates a more efficient process, features an automatic start/stop for the KKE, and the ability to stop the capsule filler in the event of an out of tolerance trend.

► **Weight feedback** – automatically adjusts the filling weights on the capsule filler.

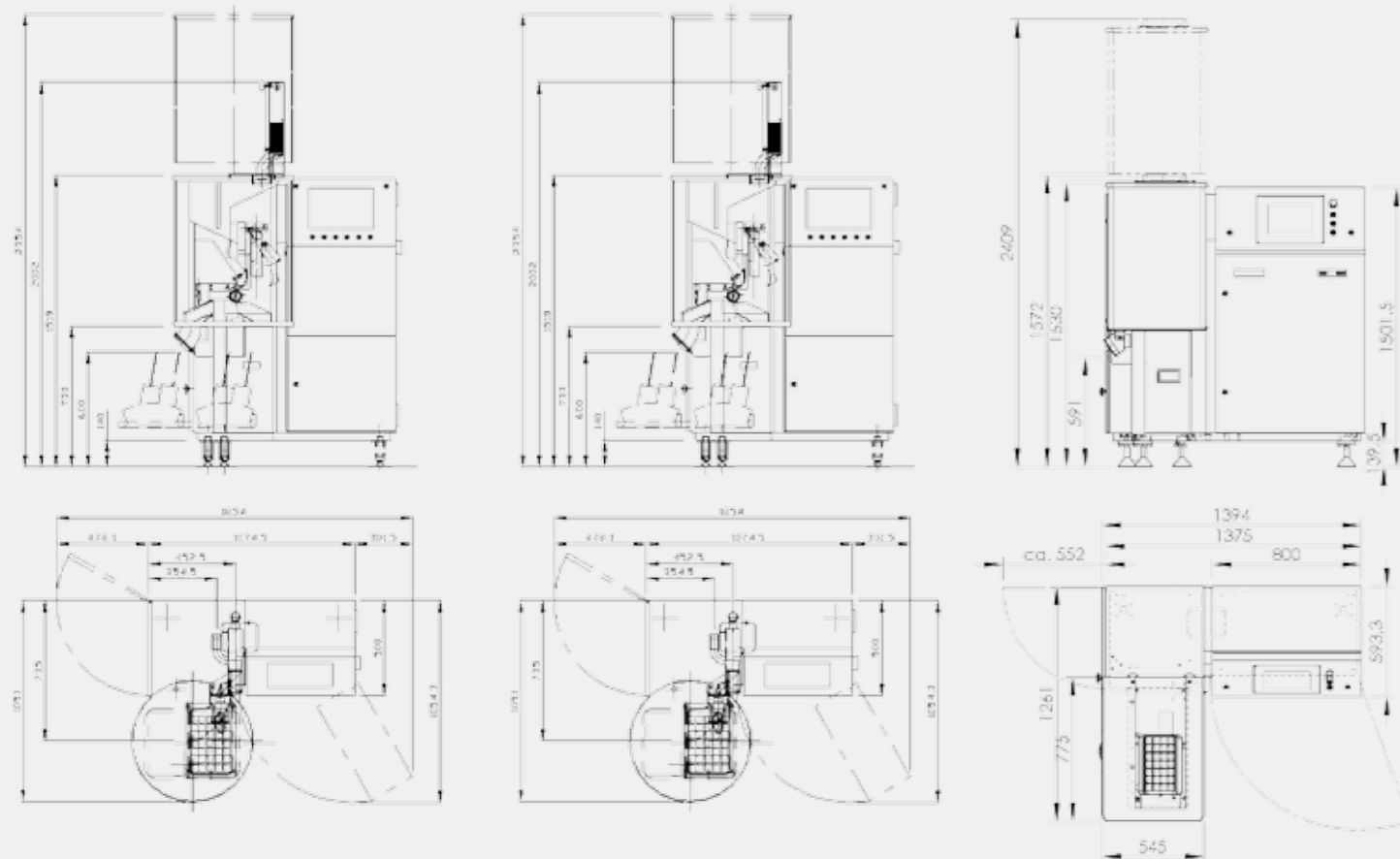
► **Teleservice**

	KKE 1700	KKE 2500	KKE 3800
Max. Output (Capsule/hr)	100,000	150,000	230,000
Sizes	000–5, elongated, DB	000–5, elongated, DB	000–5, elongated, DB
Accuracy	+/- 2 mg (+/- 1 mg)	+/- 2 mg (+/- 1 mg)	+/- 2 mg (+/- 1 mg)
Checking range	20–2,000 mg	20–2,000 mg	20–2,000 mg
Control System	PC with Windows XP 0	PC with Windows XP 0	PC with Windows XP 0
Software	Integrated machine operation and evaluation software as standard, with download function to tie into customer network.		
Corresponding filter	Easy connection to all brands of capsule fillers.		

KKE 1700

KKE 2500

KKE 3800



Subject to technical modifications

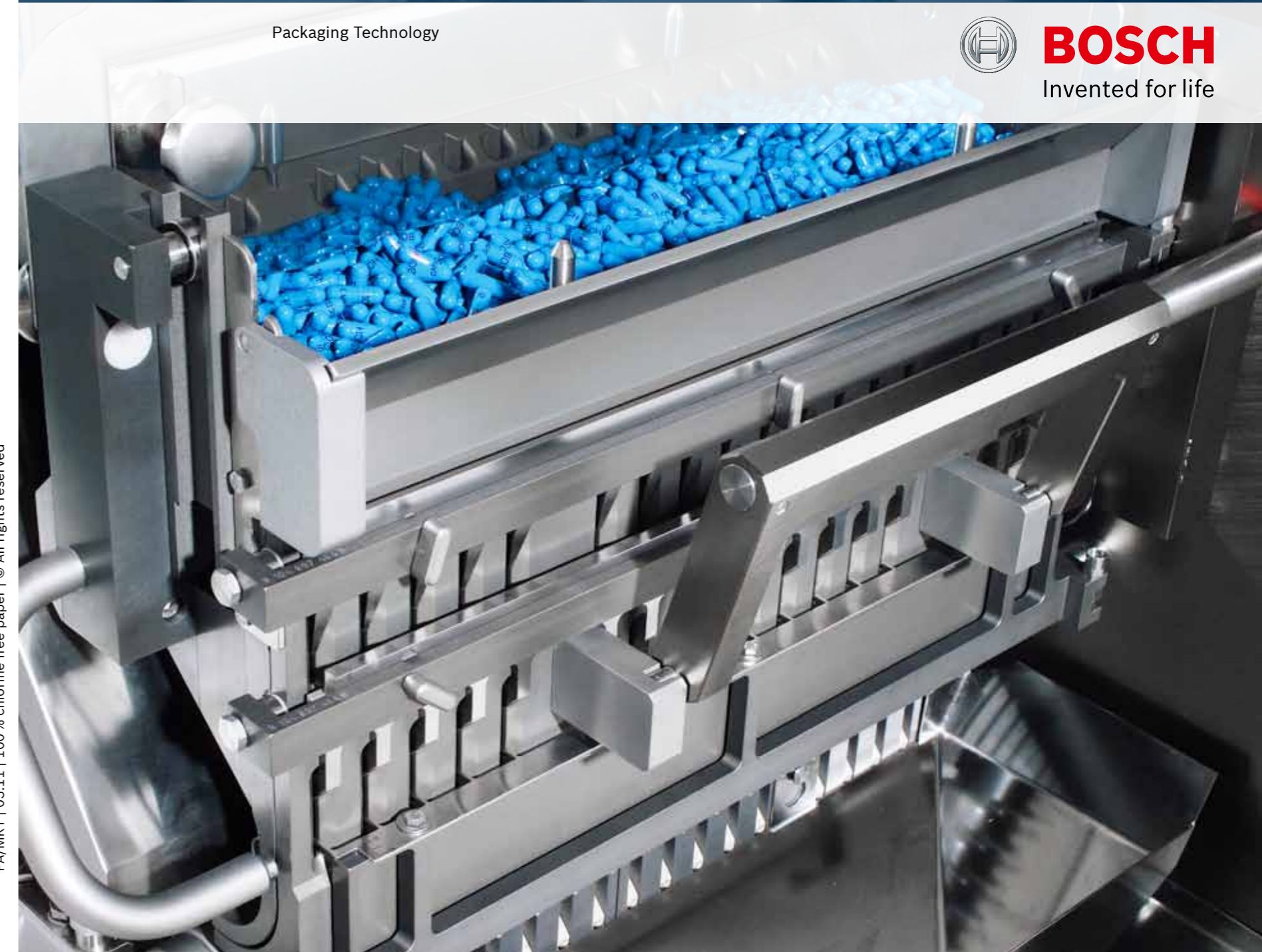
Robert Bosch GmbH
Packaging Technology
Product Division Pharma Solid

Stuttgarter Straße 130
71332 Waiblingen
Germany
Phone +49 0711 811-57147
Fax +49 0711 811-57184
www.boschpackaging.com
packaging@bosch.com



KKE 1700 | KKE 2500 | KKE 3800
Bosch Weighing Technology

Packaging Technology



Quality control – The Most Reliable Weighing Technology

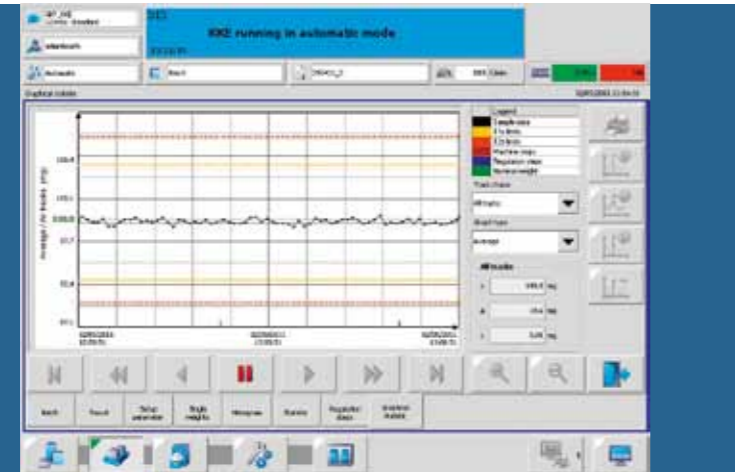
Our capsule checkweighers, the Bosch KKE 1700, KKE 2500 and KKE 3800, set the standard in the field of 100% capsule weighing. The precise gravimetric weighing technology and ergonomic design make them the ideal choice for your capsule checkweighing needs.



KKE 1700 – With an output of 100,000 capsules/hour, the KKE 1700 is best suited for your quality controls in the medium production range. The GKF 1400 and KKE 1700 combined in line are a dream-team in terms of safety.

KKE 2500 – With an output of up to 150,000 capsules/hour, the KKE 2500 is the ideal in-line partner for our GKF 2500.

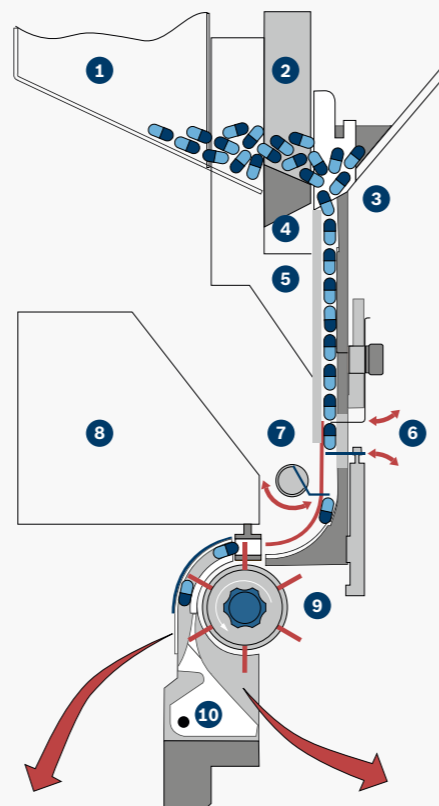
KKE 3800 – The ultra-high-speed capacity of the KKE 3800 is ideally suited to applications with more than one capsule filler, or for batch work. The checkweigher has an output of up to 230,000 capsules/hour.



Accurate weighing method
The Bosch patented “hanging weigh cell” principle safely weighs all capsules while avoiding dust or residue build up within the weighing cell. In addition the weigh cell design eliminates electrical interferences such as electrostatic fields.

Dependable production documentation
Data for the entire production run is stored and digitally evaluated by the user friendly operating system. All of the data available on the system can be saved on the integrated DVD Burner or transferred to an external system via the USB port.

Description of Function 100% check weighing



- 1 Capsule Hopper
- 2 Insertion Pusher
- 3 Magazine
- 4 Calibration bar
- 5 Size Plate
- 6 Separating Flaps
- 7 Transport Finger
- 8 Weighing Cell
- 9 Transport Wheel
- 10 Discharge Flap

Process control
Throughout the entire weighing process the capsules are positively controlled guaranteeing a secure separation of good and bad capsules.



Size changeover in < 1 min
The ergonomic design, which successfully meets cGMP requirements permits a size changeover in less than one minute. All change parts can be quickly disassembled without tools, allowing rapid cleaning with no residues.



Easy, fast cleaning
Due to the hermetic separation of the production and drive section (balcony design) there is no contamination of the product and the machine is easy to clean.



Standard automatic trouble shooting (ASB)
The ASB function automatically detects and ejects deformed capsules, helping to eliminate unnecessary downtime and increase productivity.